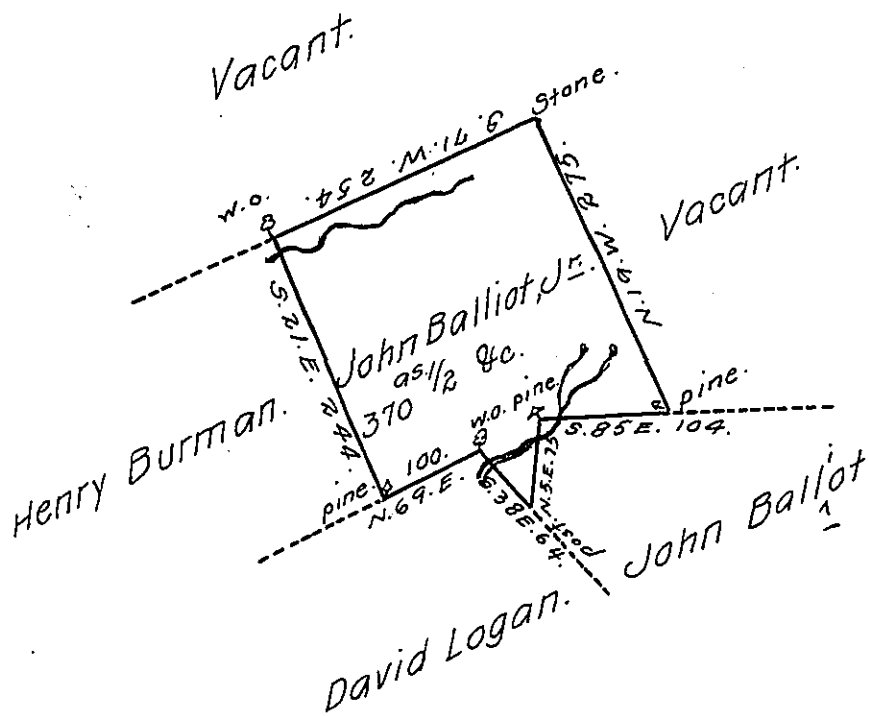


Butler
Luzerne.



Draft of a tract of land called Painter House situate in the County of Luzerne. Containing three hundred & Seventy acres 1/2 & allowance. Surveyed for John Balliot, June 10th. day of October, 1793. by virtue of a warrant dated 24th. day of August, 1792.

To Daniel Brodhead, Esqr, } by Wm. Gray, D.S.
 Surve. Genl. }

Situate in _____

Situate in Nescopeck Township, Luzerne County.

IN TESTIMONY that the above is a copy of the original remaining on file in the Department of Internal Affairs of Pennsylvania, made conformably to an Act of Assembly approved the 16th day of February, 1833, I have hereunto set my Hand and caused the Seal of said Department to be affixed at Harrisburg, this twenty first day of August, 1911.

Henry Horck
 Secretary of Internal Affairs.